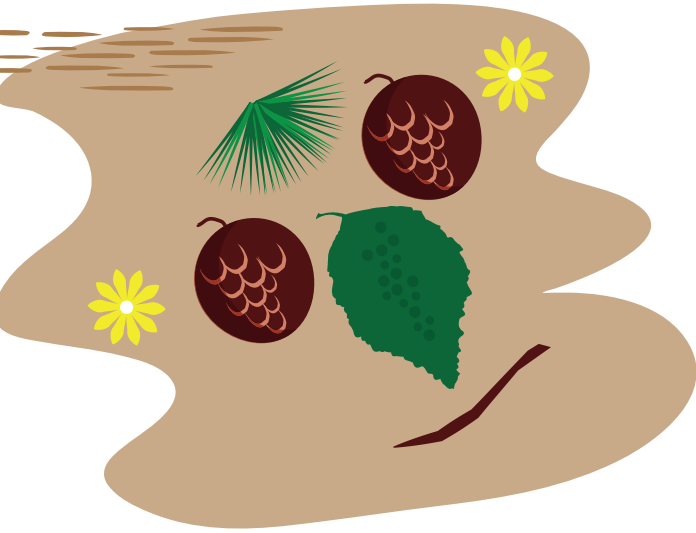


LAND ART

Land Art is visual art that is made using natural materials.

Land Art appeared in the 1960s, when artists began to create works of art outdoor in nature settings. Materials used in Land Art can include leaves, pine needles, branches, stones, snow or even pieces of ice. Land Art interacts with its surroundings. The place where a piece of Land Art is situated is often significant in some way. Although Land Art works can be massive, they are made in a way that respects and does not harm the environment.

Land Artworks are often made to be temporary. Wind, rain and sun are destined to wear it down and allow the work to be gradually absorbed by its surroundings. The creation process itself is often lengthy, but it is as important as the resulting work of art. Land Art works are carefully documented and preserved in photographs and videos.



LAND ART ASSIGNMENT

Select and gather your materials from nature.

Materials can include leaves of different hues, pine needles, pinecones, stones, sand, etc. Choose a suitable location and assemble your work of art.

What form, shape or pattern will it take? Does your work of art bring something new to its surroundings? Are you highlighting something particular in this setting? Does your piece reveal something that you feel is of importance?

Document your creative process and your evolving work of art as you build it up, using images and video. How is your piece affected by the passage of time?

MATERIALS

Assorted materials collected from nature and image documentation tools.



TIP: You can review Land Art works together in class.

Search terms such as “land art” and “earth art” will yield a bounty of materials to ponder and discuss.