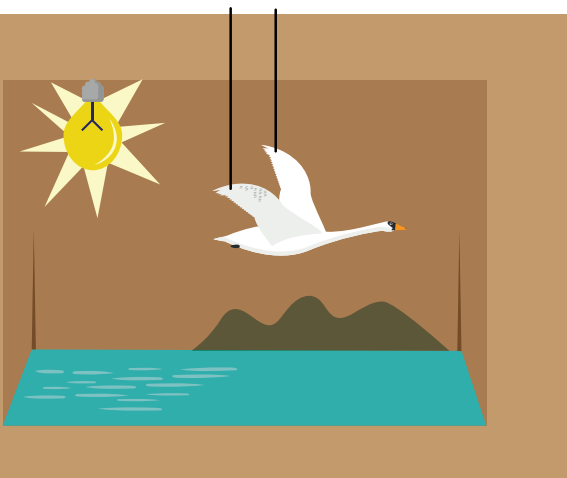




FLASH'S SCENOGRAPHY ASSIGNMENT

In films and theater plays “the set” is the place where we see the actors move around in, the background, furniture etc. The set tells us a lot about what is going on: the place, the atmosphere, the historical era in which the story is unfolding. Sets can reflect real life (for example in kitchen scene) or they can be imagined places, like somewhere in outer space or in a magical forest.



ASSIGNMENT: CREATE YOUR OWN SET

Choose a scene from a book that you really like and for which you want to create a miniature set. Consider where the scene will take place and what objects and furniture are needed to make the scene work. What colors and materials might help create the right atmosphere and to tell the story in the scene that you have chosen?

Make a miniature model of the set using, for example, a cardboard box.

Consider which set elements should be in the background and which in the foreground.

Then start building the set using different materials, paints and glue.



MATERIALS:

- A cardboard box
- Scissors
- Glue
- Bits of material
- Cardboard
- Odd bits and ends that can be used
- Paints



TIP:

Consider making miniatures also of the main characters in the story.

You can then film the stage set from the front, with the characters “springing to life” as the students read the lines from the script out loud.